

*Compost to Water*  
BY SUNCLEAN LLC





## The Company

**SunClean™ LLC** is proud to introduce **Compost to Water™** (Patent Pending # 12/076.677). These MADE IN AMERICA processing units and our exclusive "BIO-HELPER" microorganisms are the first self-contained food waste elimination system designed to fit seamlessly into any commercial kitchen, supermarket, hotel, resort, or an commercial food distribution application. Our customers enjoy cost saving benefits, as well as improved work flow and a cleaner work area with no need to store food waste for traditional pick-up. The rising costs of waste collection and disposal make the use of the **Compost to Water™** equipment a sound financial investment.

**SunClean™ LLC's CTW™** rapidly decomposes all food waste into a nutrient-rich liquid suitable for discharge into public waste water disposal systems. Initial studies demonstrate that the water discharged may have a positive application for use as a fertilizing agent.

**SunClean™ LLC's** mission is to provide a safe, efficient, economical and ecologically friendly system of processing food waste at its source.



### The Problem

Food waste, by weight, is the third largest component of all waste generated and occupies 30% of landfill space.

Governmental agencies estimate that nearly 32 million tons of food waste is disposed of annually at a cost of more than \$1 billion dollars.

**Compost to Water™** is the answer for today and the future.



### The Solution

**SunClean™ LLC** has developed **Compost to Water™** to revolutionize the disposal of food waste, based on the principle that waste should be dealt with at its source. As waste is generated, it is placed into the **Compost to Water™**, which completes the decomposition process automatically. There is no residual waste to remove.

**Compost to Water™** is the only cost effective, ecologically friendly and sanitary solution to the



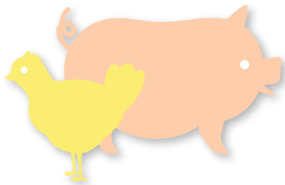
## Ecological Benefits

- Preserve landfill space
- Reduce carbon footprint
- Reduce truck traffic
- Reduce the use of fossil fuels
- Reduction of harmful emissions
- Reduce odor at source and disposal sites
- Reduce food source for rodent population
- Create a cleaner environment

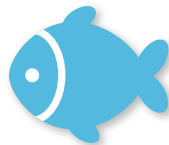
## Economical Benefits

- Easy installation
- Quiet, clean and cost effective
- Low cost operation and hassle free maintenance
- Low cost maintenance contract
- Long lasting formula (1 Year)
- Fully automated operation
- OSHA compliant
- Continual feed
- Reduce waste disposal costs

### Yes All organic food waste



Meat & Poultry



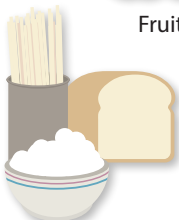
Fish



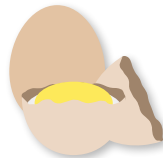
Fruit



Vegetables



Pasta, Rice, Bread



Egg shells

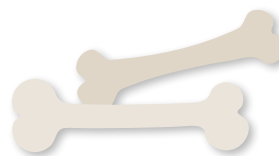
### No Any inorganic food waste



Metal, Wood,  
Cans, Bottles



Plastic, Rubber,  
Vinyl, Paper



Solid Bones  
(see shredder options)



## Microbial Formula “Bio-Helper”

In **SunClean’s** Patent Pending, mechanically controlled, decomposition process, microbes play the most important role. Different microbes produce different enzymes; these enzymes are the protein catalysts responsible for the metabolism of organic waste. We carefully select the most effective microbes and combine them proportionally to perform best with the **Compost to Water™**. Of course, these microbes are completely safe for human and animal contact and are certified Bio-Safety Level 1. Our Patent Pending formulation **BIO-HELPER** is MADE IN AMERICA and will last up to one year in the **Compost to Water™**.

“Patent Pending”

“Bio-Safety Level 1”

“Made in America”

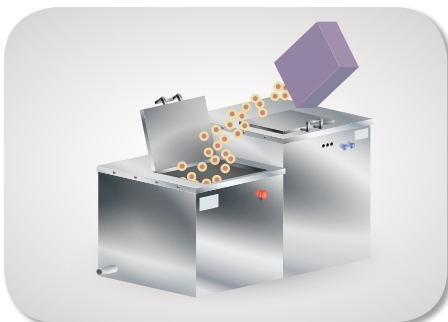
## The Compost to Water™ Decomposer

**Compost to Water™** is a totally self-contained, continual feed, organic waste disposal system designed to biologically convert solid food waste materials into liquid. Using a process perfected by nature, it decomposes food waste into a nutrient rich liquid that is virtually odor-free, and is safely disposed of through existing public waste water treatment systems. The primary function of **Compost to Water™** is to accelerate the natural decomposition process by maintaining optimal levels of aeration, moisture, and temperature. Under these controlled conditions, our unique and Patent Pending microorganisms can safely decompose any food waste at an accelerated rate to natural decomposition. **Compost to Water™** can safely and quickly decompose any kind of food waste, including: vegetable/fruit scraps, raw and cooked meats, fishes, poultry, and dairy products. Our two larger units can be equipped with an optional integrated shredder to handle bones, shells, and pits more effectively.



## Treatment Process

Annual Treatment



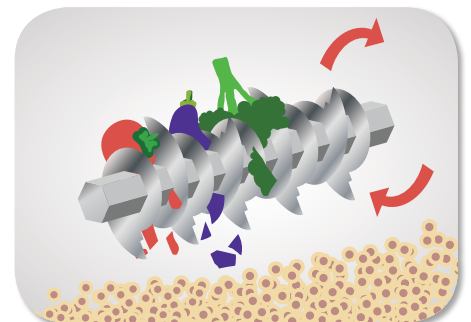
“Bio-Helper” microbial formula is added

Stage 1



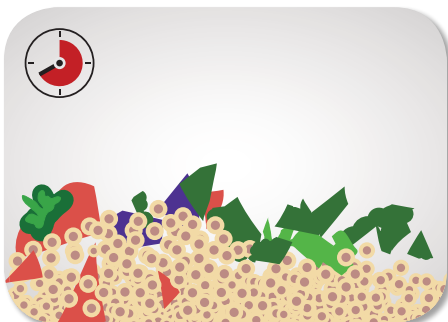
Food waste added

Stage 2



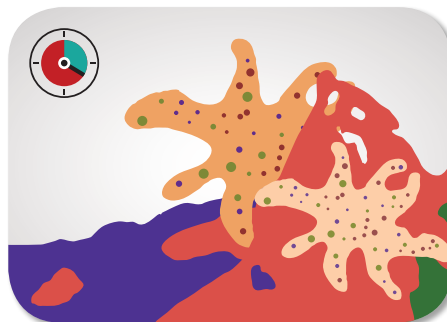
Shredder activated (*optional*)

Stage 3



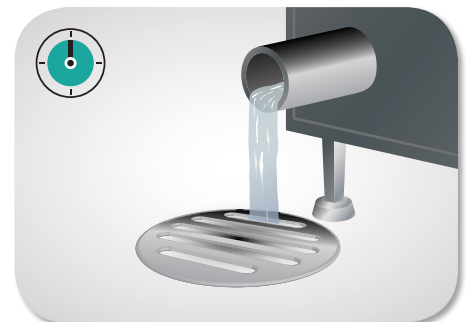
Food waste mixed with microbes

Stage 4



Digestion and Decomposition

Stage 5



Discharge in liquid form

# Models and Specifications



## CTW-EZ

### Capacity

Up to 1000 lbs / Day

### Electricity

208V / 30 A / 60Hz / 3PH

### Total Electric Consumption

4.5Kw / Day

### Dimensions

31.19" (W) x 53.31" (H) x 79.13" (L)



## CTW-EZ XL

### Capacity

Up to 1500 lbs / Day

### Electricity

208V / 30 A / 60Hz / 3PH

### Total Electric Consumption

4.7Kw / Day

### Dimensions

35.13" (W) x 53.19" (H) x 93.15" (L)

### Optional Shredder

CTW-EZ and CTW-EZ XL can be equipped with an optional integrated shredder. The shredder will handle bones, shells, pits, and larger items, reducing them to approximately 1/2 inch in size. Smaller pieces assist in accelerating the decomposition process, increasing volume throughput.

For more information, please contact:



### SunClean™ LLC

15 Cutter Mill Road, Suite 201

Great Neck, NY 11021

Tel 516-864-0003 • Fax 516-5587223

Web [SunCleanLLC.com](http://SunCleanLLC.com)

Email [info@SunCleanLLC.com](mailto:info@SunCleanLLC.com)





**SunClean LLC**

15 Cutter Mill Road, Suite 201

Great Neck, NY 11021

Tel 516-864-0003 • Fax 516-5587223

Web [SunCleanLLC.com](http://SunCleanLLC.com)

Email [info@SunCleanLLC.com](mailto:info@SunCleanLLC.com)

