



# SunClean 3-in-1™

## Trash/Recycling Compactor/Cardboard Baler

### Operating Manual

English (version 04/10/14)

For 24/7 Warranty Service & Technical Support, call:

US & Canada support call: 1 (855) 473-1SUN (786)

International support call: 1 (516) 864-0003

Service Fax: 1 (516) 558 7223

Sales: 1 (855) 864-0003

<http://SunCleanLLC.com>

### Business Hours:

Monday – Friday: 9:00 AM to 6:00 PM EST

(excluding holidays)

After hours, your call will be handled by a voice mail paging service. The on-call technician will be paged and will return your call.



### Table of Contents

Introduction.....	3
Unpacking .....	3
Intended Use .....	3
Hazard Communication Standard.....	3
Serial Number .....	3
Specifications .....	4
Warranty.....	5
Service Information.....	6
Equipment Safety .....	7
Compactor Set Up and Operation.....	10
Cardboard Baling.....	16
Parts Information.....	19
Electrical Schematic.....	20

The information in this manual is subject to change without notice.

IN NO EVENT WILL SUNCLEAN LLC BE LIABLE FOR TECHNICAL OR EDITORIAL OMISSIONS MADE HEREIN; NOR FOR DIRECT, SPECIAL, INCIDENTAL, OR CONSEQUENTIAL DAMAGES RESULTING FROM THE FURNISHING, PERFORMANCE, OR USE OF THIS MATERIAL.

This manual is copyrighted with all rights reserved. Under the copyright laws, this manual may not be copied, in whole or part, without the written consent of SunClean LLC.

Product names mentioned herein are for identification purposes only, and may be trademarks and/or registered trademarks of their respective companies.

## Introduction

This manual contains important information on the proper installation, operation, and care of the SunClean 3-IN-1 Trash/Recycling Compactor/Cardboard Baler. Following the instructions and procedures in this document will ensure that your compactor provides years of reliable service. If any problems with the compactor arise, this manual will also provide troubleshooting tips and service information.

## Unpacking

Remove all packing material from Compactor. Open the lower cabinet door and remove manual, bags and bag roll spindle. Open the upper cabinet door to install bag roll spindle and store bags. Reassemble all components (see pages 10-18 for setup and operation).

## Intended Use

The SunClean 3-IN-1 Trash/Recycling Compactor/Cardboard Baler is intended to compact trash and bale cardboard. The performance of the system requires that recommended procedures for storage and handling of compacted or baled product be followed closely.

This compactor is not designed to compact hard plastic, wood, metal, glass or stacks of books, magazines, or newspapers.

## Hazard Communication Standard

Hazard Communication Standard (HCS) Procedures in this manual may include the use of chemical products. These chemical products will be highlighted with boldface letters followed by the abbreviation (HCS) in the text of the procedure. See the HCS Manual for the appropriate Material Safety Data Sheets (MSDS).

## Serial Number

The information on the serial number identification label is as follows:

*Example: s/n CPTR1102B00021*

CPT = Model

R = Manufacturing Facility

11 = Year

02 = Month

B = Revision Level

00021 = Sequence Number

## Compactor Specifications

### Electrical Requirements:

- 120 Volts a.c., 60 Hertz, 15 Amps, 1Φ

### Dimensions:

- 33" wide, 27." deep, 72" high
- (84 cm x 69 cm x 183 cm)

### Recommended Operating Dimensions:

- 37" wide, 64" deep, 75" high
- (94 cm x 163 cm x 191 cm)

### Weight:

- 800 lbs ( 363 kg)

### Waste Cube Capacity:

- 300 lbs (136 kg), weight may vary with waste product.

### Operating Temperature:

- -10°F to 90°F (-24°C to 32°C) (Recommended Ambient Operating Temperature of 75°F (24°C))

### Maximum Operating Altitude & Safe Tilt:

- Maximum Altitude: 8500 ft (2590 meters), Maximum Tilt = 10 degrees

### Noise Emissions:

- < 88 dB (A)

### Hydraulic System:

- 1 HP
- Fluid, Chevron ATF MD-3
- System Capacity, 1.25 US Gal. (4.7 l)
- Pressure, 2300 – 2500 psi (2.3 – 2.5 kip)

## Lift Cart Specifications

### Weight

- 148 lbs ( 67.6 kg)

### Dimensions:

- 26" wide, 37." deep, 77" high
- (26 cm x 94 cm x 196 cm)

### Maximum Lift Height:

- 61 " (155 cm)

### Lift Capacity

- 400 lbs (181 kg)

## Warranty

The terms “we”, “us”, “our” or “factory” hereinafter refer to SunClean LLC. We warrant the purchased product to be free from manufacturing defects in material and workmanship under normal use and conditions for the period and component specified below. Warranty is part only unless otherwise specified.

### **Components Covered**

Electronic Assemblies	1 year (parts & labor)
Electrical and Mechanical Moving Parts	1 year (parts & labor)
Structural frame work and Enclosures	1 year (parts & labor)
Power cord	90 Days

### **Term**

### **Operator removable components:**

Lift Cart Assembly	90 Days
Wheel stop	90 Days
Waste sleeve	90 Days
Waste tray	90 Days

**The Warranty period commences on the date of shipment of the SunClean 3-IN-1 Trash/Recycling Compactor/Cardboard Baler (hereinafter “Product”) from our manufacturing facility.**

EXCEPT AS OTHERWISE PROVIDED HEREIN WE MAKE NO OTHER WARRANTIES, EXPRESSED OR IMPLIED AND SPECIFICALLY DISCLAIM ANY WARRANTY OF MERCHANTABILITY OR FITNESS FOR A PARTICULAR PURPOSE.

We shall not be liable for any direct, indirect, consequential damages (including damages for loss of business profits, business interruption, loss of business information and the like) arising out of the use of or inability to use the Product.

THIS WARRANTY IS VOID IF THE PRODUCT IS NOT FUNCTIONING CORRECTLY DUE TO ABUSE OR NEGLIGENCE BY THE PURCHASER, ITS EMPLOYEES, AGENTS, OR OTHER REPRESENTATIVES EITHER BY BREAKING, BENDING, MISUSE, ABUSE, DROPPING, ALTERATION, IMPROPER MAINTENANCE OR ANY OTHER FORM OF NEGLIGENCE OR IMPROPER USAGE. THIS WARRANTY DOES NOT COVER DAMAGE TO THE PRODUCT CAUSED BY NATURAL CAUSES SUCH AS LIGHTNING, ELECTRICAL CURRENT FLUCTUATIONS, FLOOD, FIRE, TORNADOES, OR OTHER ACTS OF GOD. WE WILL INVOICE PURCHASER FOR REPAIRS MADE NECESSARY BY THE HEREIN LISTED CAUSES.

This warranty is governed by the substantive laws of New York, U.S.A., without giving effect to the conflict of law provisions.

This warranty is non-transferable and applies only to the original Purchaser.

## Service Information

### Warranty Service

Warranty service must be initiated by calling our Technical Support Hot Line at 1-855-864-0003 (U.S./Canada) to establish all warranty requests.

Our Technical Support personnel will determine the cause of failure and provide appropriate resolution. Any required replacement parts will be provided by us or by an authorized Service Support Center/Parts Distributor.

Our Technical Support personnel will make all reasonable efforts to perform such repairs during normal business hours, and will not be responsible for any after-hours or holiday charges.

### Non-Warranty Service

Service is normally conducted by customer appointed personnel, or by contracting a local service agent. The service person must be licensed in refrigeration to troubleshoot, open, or repair refrigeration and related systems.

Service fees are in accordance with industry standards.

Replacement parts are available through local Service Support Center/Parts Distributors or direct from us by calling 1-855-864-0003 (U.S./Canada) in the event a local distributor is not available.

Our Technical Support Hot Line is available for telephone assistance providing product technical support, parts and parts information, and service agent referral.

**Contact our Technical Support Hot Line at 1-855-864-0003 (U.S./Canada).**

Record the following information for your records:

---

Date of Installation

---

Service Agency Telephone

---

Serial Number

When repairing this unit, use only replacement parts supplied by us, or supplied by our Factory Authorized Parts Distributor. Use of replacement parts other than those supplied by us or by our Factory Authorized Parts Distributor will void the warranty.

All shipping charges are F.O.B. factory, and are subject to change without notice. Prices will be those in effect at the time of shipment.

SunClean LLC. reserves the right to make suitable substitutions in materials, depending upon their availability.

## Equipment Safety

- In a safety emergency, press the stop button, then immediately disconnect the Compactor Power Cord from the electrical outlet.
- Only authorized personal are permitted to operate Compactor.
- Disconnect the Compactor Power Cord from the electrical outlet before cleaning, moving or servicing the Compactor.
- A dedicated 110 volt, 15 amp circuit is necessary.
- Do NOT obstruct access to the electrical outlet or place pressure on the power cord.
- Do NOT use an extension cord.
- Inspect the Compactor on a regular basis to identify potential problems before they occur.
- Keep the Compactor clean.
- Keep hands away from the Compacting mechanisms while the Compactor is operating.
- Do NOT move the Compactor excessively; this will cause unnecessary wear on the Compactor.
- DO NOT SPRAY THE COMPACTOR WITH LIQUID OR SOLVENTS. The Compactor cabinet is not sealed against jetting fluids and contamination may get into sensitive components. Spraying the Compactor may void the warranty.
- Always close or reinstall service panels when maintenance is complete.
- Do NOT drill, modify or otherwise puncture cabinet walls or top.
- The compactor is top heavy, keep unit upright at all times.
- Use caution when using or handling Lift Cart, Waste Sleeve and Waste Tray.
- Always transport waste or cardboard bales with the Lift Cart in the lowest possible position.
- Thoroughly inspect Lift Cart and lift cable before use.

### **CAUTION!**

**Only trained and/or qualified personnel should perform service on the Compactor and Lift Cart.**

**Service functions described in this manual could cause irreversible damage to the equipment and/or injury to personnel if performed improperly.**

**If the power cord is damaged, it must be replaced by the manufacturer or its service agent or a similarly qualified person in order to avoid a hazard.**

## Equipment Safety con't



Upper Door

Operator Panel

Loading Door

Lower Door



Do not lean in or reach above compaction place when in use

**CRUSH HAZARD!!!  
CRUSH HAZARD!!!**

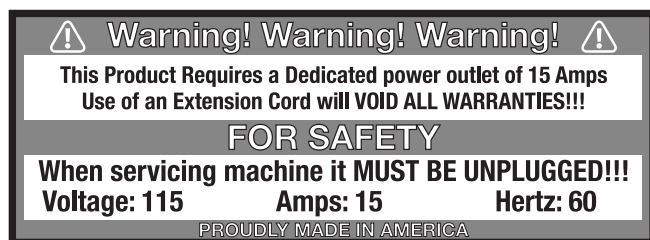
Remove all material from top of compaction plate when in use

No se apoye en o por encima de llegar a su lugar de compactación cuando está en uso

**PELIGRO DE APLASTAMIENTO!  
PELIGRO DE APLASTAMIENTO!  
PELIGRO DE APLASTAMIENTO!**

Retire todo el material de la parte superior de la placa de compactación cuando está en uso

Labels located on top of Compaction Plate.



Label Located on the back of the unit on the power cord



## Equipment Safety con't

**Waste Bin Hooks**

**Winch** - clockwise to raise  
counter-clockwise to lower.

**Lift Plate**



- Do not stand under or allow personnel under load when raised.

- Do not lower load unless area below is clear of personnel and obstructions.



- Do not raise load unless lift is on a firm level surface.

- Do not move lift with a raised load.

- Do not tilt lift with a raised load.

- Never leave lift unattended in a raised position



-Do not stand or sit on Lift Plate

-Do not exceed capacity.



- Do not use lift if cable is worn, frayed, kinked, or damaged.

- Do not use lift with less than 4 wraps of cable on the winch drum when the lift plate is fully lowered.



- Once the Lift Plate has reached either the top or the bottom of the lift, do not continue turning the winch. Over-tightening or unspooling the cable will cause accelerated cable-wear.

## Compactor Setup

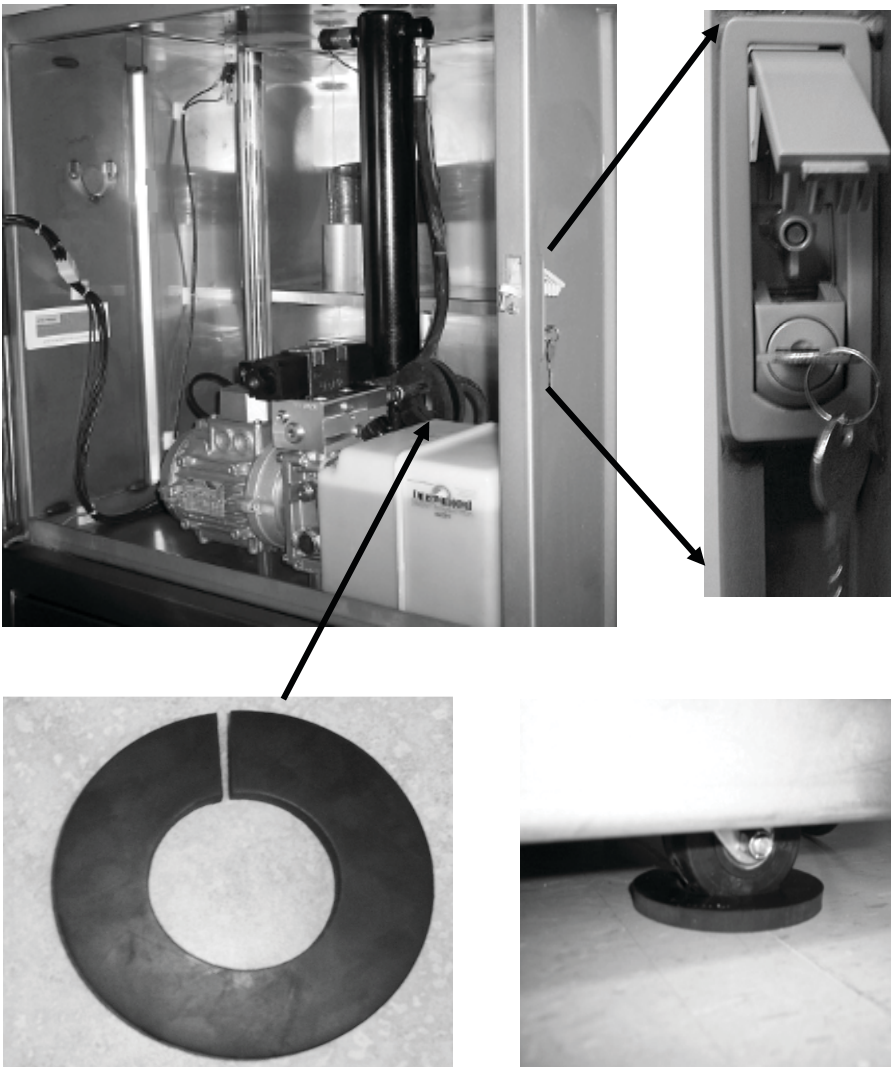
### Selecting the Location and Placement

See specifications on page 3 of this Manual for electrical and dimensional specifications and page 7-9 for safety information.

A climate controlled environment is preferred. The Compactor is not waterproof or weatherproof. The space must allow for the doors to open at least 90 degrees to allow access to both the upper and lower cabinets, removal of the Waste Bin or cardboard, and allow access for the Lift Cart.

The location should be level and the Compactor should stand on concrete or a similar hard surface.

Once positioned in a permanent location, open Upper Cabinet Door by depressing Door Latch located on right side of cabinet. Keys for the Door Latch and Stop Switch are located on back of the Upper Cabinet Door. Locate Wheel Stopper shown below. Place a Wheel Stopper around each of the front casters.

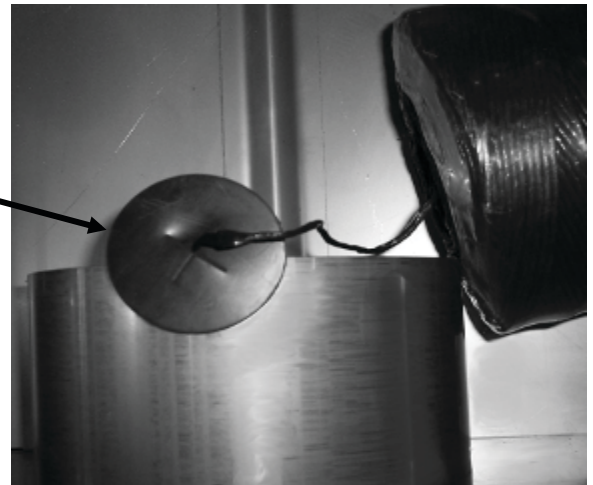


## Twine and Bag Roll

### Twine

1.) From inside the Twine spool, pull the free end of the Twine out and thread it through the Twine Holder.

Twine Holder



2.) Thread the free end of the Twine down through the Twine Shelf and between the back of the upper cabinet and the floor of the upper cabinet.

3.) Open the lower cabinet and pull the Twine down and thread it through the Corner Retainers.

4.) Pull the Twine through the Corner Retainers and secure the Twine to the Front Retainers.



### Bag Roll

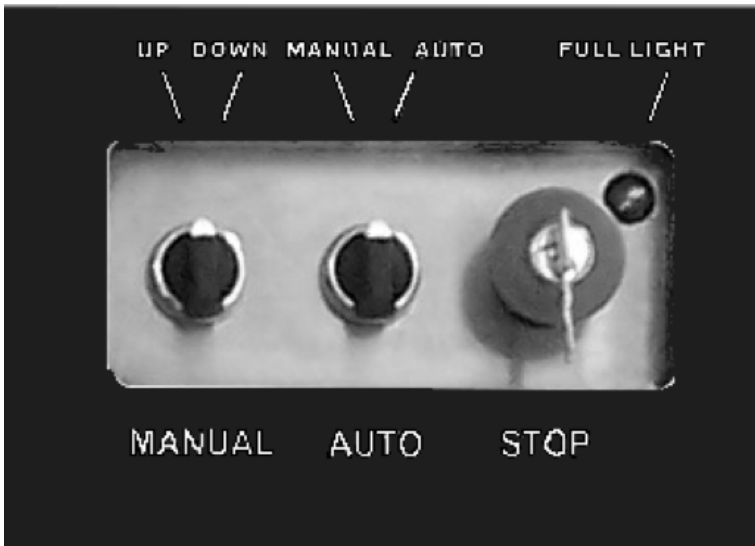
1.) Insert the Compactor Bag Spindle through the bag roll.

2.) Place the Bag Roll with spindle into the brackets located in the Upper Cabinet.



## Compactor Operation

### Operator Panel



### Safety

The Compactor will not lower the Compaction Plate with the Lower Door or Loading Door open. The Compaction Plate will rise with either door open.

### Stop Button/Switch

The Stop Button can be depressed and the Stop Switch can be locked to prevent unauthorized use and must be activated by an authorized user with a key to enable operation. The Stop Button can be depressed in an emergency to immediately disable the Compactor.

### Automatic Operation

Turn the Manual/Auto switch to the Auto position to perform a compaction cycle.

### Manual Operation

Turn the Manual/Auto switch to the Manual position and use the Up/Down Switch to move the Compaction Plate.

### Full Light

The Full Light will activate when the Waste Bin has reached its maximum volume.

## Compactor Operation con't

### Assembling the Waste Bin

Position the Waste Tray with the Cable Handle toward you. Place the Waste Sleeve over the Waste Tray aligning the Waste Sleeve corner slots with the Waste Tray corner tabs. Insert Waste Sleeve into the Waste Tray.



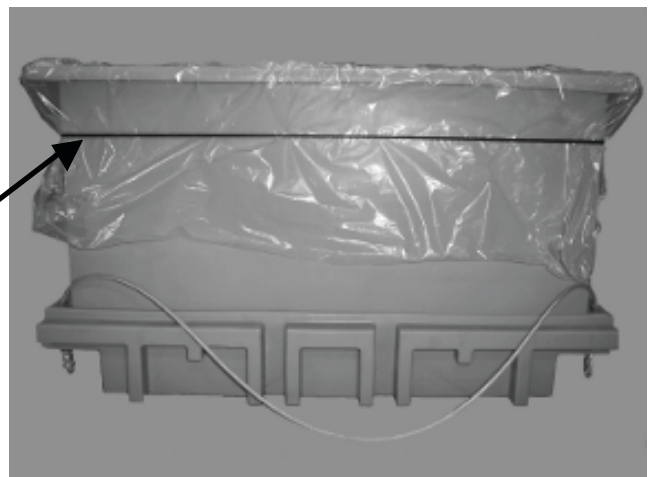
Install a Waste Bag into the Waste Bin. Be sure the Waste Bag is open and pushed into the lower corners of the Waste Bin with approximately 12 inches folded down over the upper edge of the Waste Bin. Secure the Waste Bag to the Waste Bin using the recommended Retaining Band.



**NOTE:** Proper installation of the Waste Bag will reduce damage to the Waste Bag and greatly reduce leaking and spilling of contents.

Open the Lower Door and ensure the Compactor is empty and the Ejection Strap and Twine are in place. Insert the Waste Bin. Close the Lower Door.

**Retaining Bag Band**





## Compactor Operation con't

### Waste Compaction

Open the Loading Door and insert trash. Be sure the trash is within the compaction area of the Compactor. Close the Waste Door and operate the Auto Switch. The Compactor will automatically perform a compaction cycle (approximately 22 seconds). Continue loading and compacting trash until the Waste Bin is filled to the desired volume or the Full Light turns on.



### Removing Waste Bin

Ensure Compaction Plate is at the top. Open the Lower Door and position the Lift Cart. Using the Cable Handle, pull Waste Bin onto Lift plate.



## Compactor Operation con't

### Emptying the Waste Bin

- 1.) With Lift Plate as low as possible, roll the Lift Cart to the dumpster.
- 2.) Secure Waste Bag with a knot or with excess Twine.
- 3.) Remove the Waste Sleeve from the Waste Bin.
- 4.) Position the Lift Cart at the opening of the dumpster.



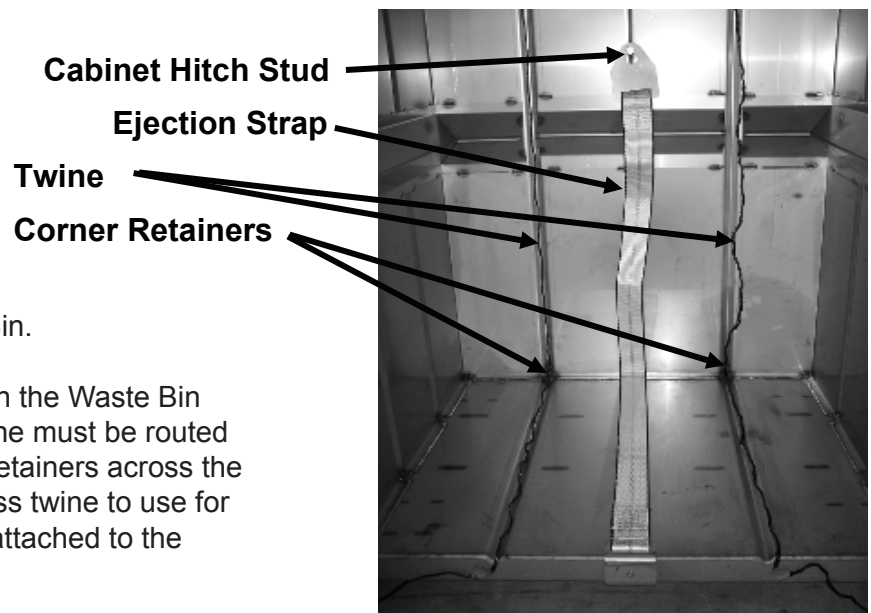
- 5.) Using the Winch, raise the Lift Plate to the top of the Lift Cart.
- 6.) Hook the Cable Handle on the Waste Tray over the hooks located on the top of the Lift Cart.
- 7.) Lower the Lift Plate until the compacted waste tilts towards the dumpster and the compacted waste can be rolled into the dumpster.



- 8.) Raise the Lift Plate and remove the Cable Handle from the hooks located on top of the lift cart.
- 9.) Lower the Lift Plate.
- 10.) Reassemble the Waste Bin and return the Waste Bin to the Compactor.



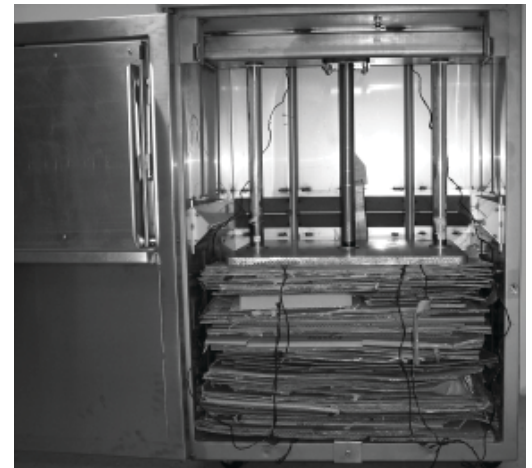
## Cardboard Baling



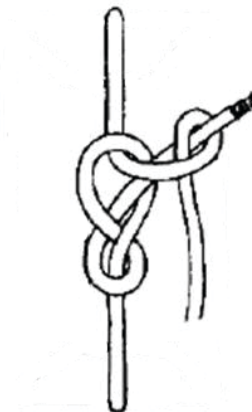
1.) Open Lower Door and remove Waste Bin.

\* Do not attempt to compact cardboard with the Waste Bin installed in the Compactor. The Baling Twine must be routed down the back of the cabinet through the retainers across the bottom and out the front. Allow some excess twine to use for tying the bale. Verify the Ejection Strap is attached to the Cabinet Hitch Stud.

2.) Close the Lower Door and insert cardboard using the Loading Door. Compact cardboard using Auto operation. Compact until you achieve a desired bale size or the Full Light comes on, which ever occurs first.



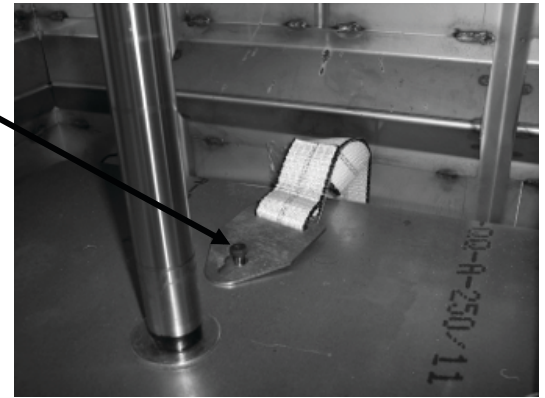
3.) Raise the Compaction Plate to the top. Open the Lower Door and pull the Twine from above and behind the compacted cardboard down over the top towards the front creating enough slack to tie the compacted bale. Close the Lower Door, select Manual and Down to compact the bale. Once compacted, release the down switch and open the Lower Door. The Compaction Plate will hold the bale compressed while you tie the twine ends using a non-slip knot as shown.





## Cardboard Baling con't

**Compaction Plate  
Hitch Stud**



7.) Once the bale is securely tied, attach the Ejection Strap to the top of the Compaction Plate Hitch Stud. Select Manual and Up to raise the Compaction Plate which will automatically move the completed bale towards the front of the Compactor using the Ejection Strap.



8.) Position Lift Cart and move the bale on to the Lift Cart Lift Plate. Move the compacted bale to the disposal area.

9.) When through compacting cardboard, close Lower Door and select Manual and Down to move the Compaction Plate to the bottom. Open the Lower Door, move the Ejection Strap from the Compaction Plate Hitch Stud to the Cabinet Hitch Stud. Select Manual and Up to raise the Compaction Plate. Install Waste Bin and close Lower Door.



## Cleaning

Proper cleaning requires some operation. Only authorized personnel should be allowed to clean the compactor.

### **Clean Compactor Daily**

Open Lower Door and raise Compaction Plate as necessary. Remove Waste Bin, separate Waste Sleeve from Waste Tray. Thoroughly wash with mild soap and water then rinse with clear water, stand on end and allow to dry. Check the Compaction Plate and clean or remove any substances on top of or stuck to the Compaction Plate. Remove Twine from Lower Cabinet area. Sweep Lower Cabinet and if necessary, thoroughly wash Lower Cabinet with mild soap and water. Rinse with clear water and allow to dry before reassembly and use.

**CAUTION :** This Compactor Cabinet is not water tight. Spraying the Compactor with water can void your warranty. If, at your own risk, you choose to pressure wash the Compactor or compactor components, always remove the power cord from the outlet. Be careful not to spray water into the Upper Cabinet.

Immediately clean any substance that is spilled or leaked into the Lower Cabinet or Waste Bin. Combined substances from compacted waste can cause a health hazard or become toxic.

## Parts Information

To order replacement parts or service, contact:

### **SunClean™ LLC**

15 Cutter Mill Road, Suite 201  
Great Neck, NY 11021

PH: 855-864-0003

## Commonly Ordered Parts

294928	"Bag, 3 ML, 50 per box, 27x27x54"
294929	"Twine, TT 2500"
295003	"Band, Rubber, Bag Retainer"

# Electrical Schematic

